

Why Blueleaf?

Here's why:

- **The Best Products.** Blueleaf offers the most advanced patient handling products available. **By purchasing Guldmann or Molift products, you are accessing the best possible solutions for your patient and caregiver.**
- **A Proven Track Record.** With over 250 ceiling lift systems in Acute Care within Alberta alone, Blueleaf has by far the most Acute Care experience of any lift company in the province. **Put that experience to work for you.**
- **A Comprehensive Team.** Our team members love to work with customers, it's as simple as that. We put a premium on being easy to deal with and providing results that **increase patient safety and reduce caregiver injury.**

Where do I start?

Get in touch with one of our Product Consultants to get started with an initial lift assessment. You can choose between:

Phone - (888) 243-3577 or (780) 435-4951

Email - sales@blueleafhealthcare.com

Unit 3, 6104 – 82 Avenue
Edmonton, Alberta, Canada
T6B 0E7

blueleaf
healthcare

Patient Handling Products

- Ceiling Lifts
- Floor Lifts
- Patient Slings
- Repositioning and Lifting Tools

blueleaf
healthcare

Why the Guldmann GH3 Lifting System?



Always on and always ready for use
Continuous Charge Tracking.



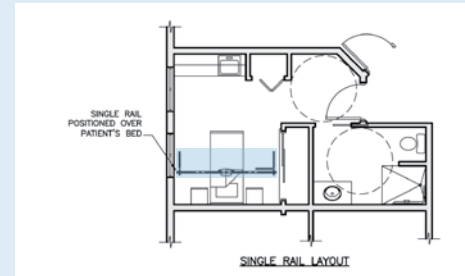
Safe Working Loads of 440, 550, 660, 770 and 1100 lbs
with Integrated Weigh Scale.



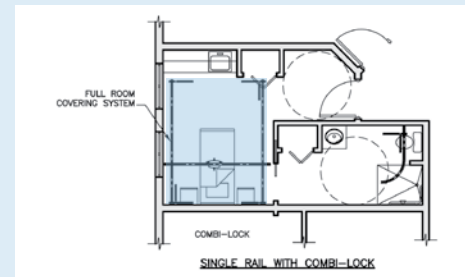
LCD Screen Hand Control with CareLift Management
Program shows number of lifts, how lifts are performed,
and when lifts are taking place.



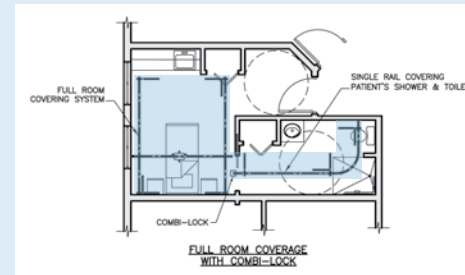
Wide range of slings including the popular and
Guldmann exclusive Turner Sling.



BASIC SOLUTION -
Single Rail Systems



COMPREHENSIVE SOLUTION -
Room Covering Systems



ULTIMATE SOLUTION -
Room Covering Systems to
Single Rail Systems

**AMAZING
FLEXIBILITY
IN ROOM
LAYOUT**

Preferred Patient Lifts Molift Smart Lift

- Lightweight Aluminum Full Lift
- 330 lbs Maximum Capacity
- Fully folds for Transportation/Storage
- Carry Case Available
- Full Range of Slings and Accessories Available



Heavy Duty - Partner 205

Bariatric - Partner 255



Also from Molift...**THE LOWEST HEIGHT BASE IN THE INDUSTRY!**

Molift Lowest Base

Molift Partner lifts can be specified with the 2" high low-base. This allows the lift to pass beneath any Acute Care Bed or Stretcher on the market today, even the Stryker™ Zoom Stretcher! **Complete Compatibility!**



Sit/Stand - Quick Raiser II